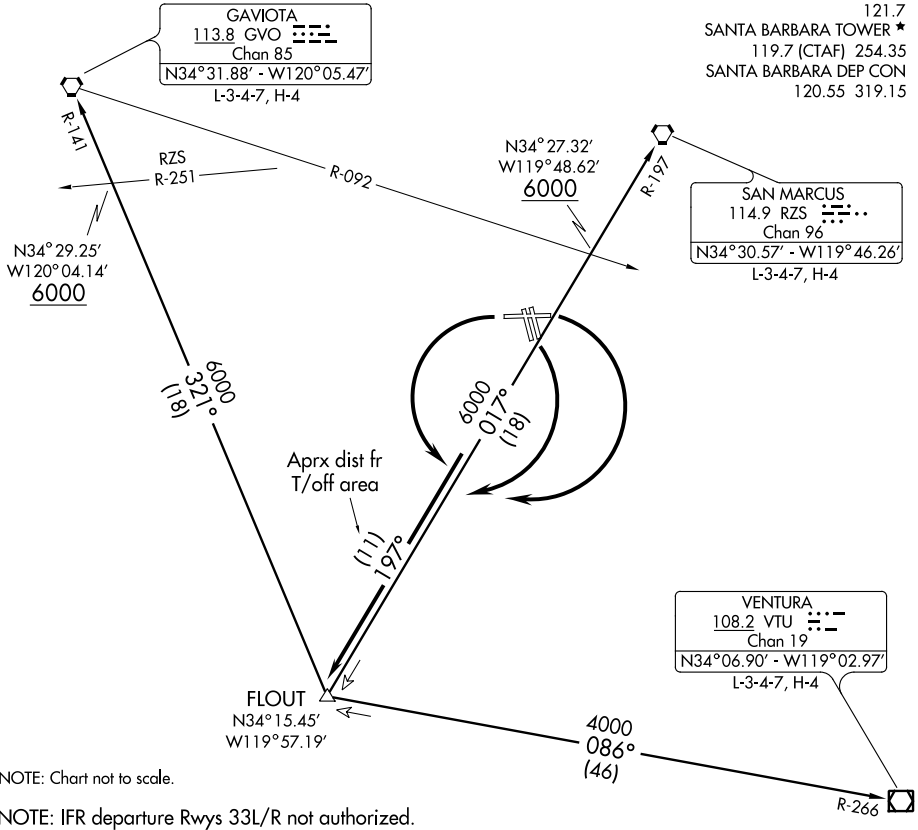


# FLOUT FIVE DEPARTURE

SL-378 (FAA)

SANTA BARBARA MUNI (SBA)  
SANTA BARBARA, CALIFORNIA

ATIS 132.65  
CLNC DEL  
132.9  
GND CON  
121.7  
SANTA BARBARA TOWER ★  
119.7 (CTAF) 254.35  
SANTA BARBARA DEP CON  
120.55 319.15



SW-3, 03 APR 2014 to 01 MAY 2014

SW-3, 03 APR 2014 to 01 MAY 2014

NOTE: Chart not to scale.

NOTE: IFR departure Rwys 33L/R not authorized.

## DEPARTURE ROUTE DESCRIPTION

TAKE-OFF RUNWAYS 7 and 15L/R: Turn right, thence. . . .

TAKE-OFF RUNWAY 25: Turn left, thence. . . .

. . . . intercept and proceed via RZS R-197 to FLOUT INT. Thence via (transition or assigned route.)

GAVIOTA TRANSITION (FLOUT5.GVO): From over FLOUT INT via GVO R-141 to GVO VORTAC. Cross RZS R-251 at or above 6000'.

SAN MARCUS TRANSITION (FLOUT5.RZS): From over FLOUT INT via RZS R-197 to RZS VORTAC. Cross GVO R-092 at or above 6000'.

VENTURA TRANSITION (FLOUT5.VTU): From over FLOUT INT via VTU R-266 to VTU VOR/DME.